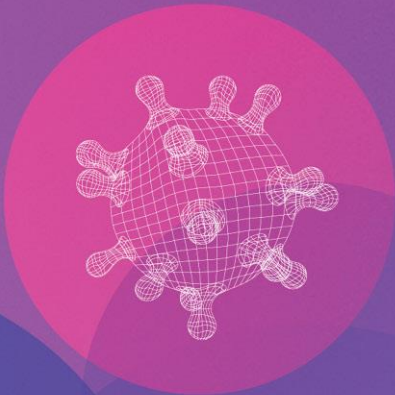


COVID Town Hall Vaccine Updates

Linda Goss DNP, APRN-BC, CIC, COHN-S

Interim System Director, Infection Prevention and Control

December 17, 2020



**THE QUEEN'S
HEALTH SYSTEMS**

Pfizer BioNTech COVID-19 Vaccine

- QMC (PB) supply of the Pfizer BioNTech COVID-19 vaccine arrived Monday morning
- We received 975 doses which was the expected allocation
- We also received the ancillary kit containing syringes, needles, gauze, bandaids
- The vaccine arrival and storage process was monitored in its entirety by a CDC observer
- Vaccine is now stored in an ultra low temperature freezer and is monitored using an electronic temperature monitoring and alert system
- We vaccinated 5 healthcare personnel on Tuesday
- The clinic opened on Wednesday and 52 individuals were vaccinated

HDOH Playbook for Vaccination Strategy

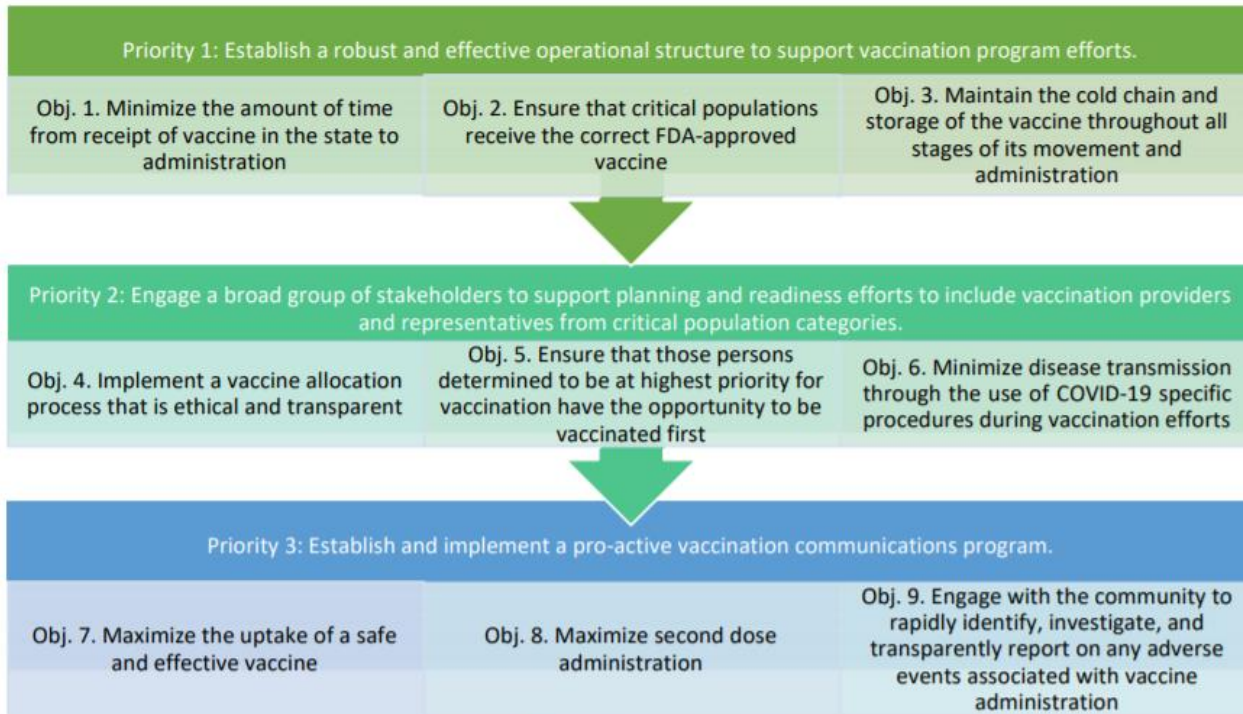


Figure ES-2: COVID-19 Priorities and Objectives

Table ES-1: Population Groups

Allocation Stage	Population Group
Stage 1a	High-risk health workers (e.g., in hospitals or nursing homes, or providing home care)—these health professionals are involved in direct patient care. Also included are workers who provide transportation, environmental services, and other health care facility services and who risk exposure to bodily fluids or aerosols.
	First responders whose jobs put them at high risk of exposure to COVID-19
Stage 1b	People of all ages with comorbid and underlying conditions that put them at significantly higher risk
	Adults aged 65 and older living in congregate or overcrowded settings
Stage 2	K-12 teachers and school staff
	Critical risk workers in high-risk settings - workers who are both in industries essential to the functioning of society and at substantially high risk of exposure
	People of all ages with comorbid and underlying conditions that put them at moderately higher risk
	People in homeless shelters or group homes for individuals with physical or mental disabilities or in recovery and staff who work in those facilities
	People in prisons, jails, detention centers, and similar facilities, and staff who work in such settings
Stage 3	Adults aged 65 and older not included in Allocation Stage 1
	Young Adults (18-22)
	Children (0-17)
Stage 4	Workers in industries and occupations important to the functioning of society and at increased risk of exposure not included in Allocation Stages 1 or 2
	Everyone residing in Hawaii who did not have access to the vaccine in previous allocation stages

	MAY PROCEED WITH VACCINATION	PRECAUTION TO VACCINATION	CONTRAINDICATION TO VACCINATION
CONDITIONS	<p>CONDITIONS</p> <ul style="list-style-type: none"> Immunocompromising conditions Pregnancy Lactation <p>ACTIONS</p> <ul style="list-style-type: none"> Additional information provided* 15 minute observation period 	<p>CONDITIONS</p> <ul style="list-style-type: none"> Moderate/severe acute illness <p>ACTIONS</p> <ul style="list-style-type: none"> Risk assessment Potential deferral of vaccination 15 minute observation period if vaccinated 	<p>CONDITIONS</p> <ul style="list-style-type: none"> None <p>ACTIONS</p> <ul style="list-style-type: none"> N/A
ALLERGIES	<p>ALLERGIES</p> <ul style="list-style-type: none"> History of food, pet, insect, venom, environmental, latex, or other allergies not related to vaccines or injectable therapies History of allergy to oral medications (including the oral equivalent of an injectable medication) Non-serious allergy to vaccines or other injectables (e.g., no anaphylaxis) Family history of anaphylaxis Any other history of anaphylaxis that is not related to a vaccine or injectable therapy <p>ACTIONS</p> <ul style="list-style-type: none"> 30 minute observation period: Persons with a history of severe allergic reaction (e.g., anaphylaxis) due to any cause 15 minute observation period: Persons with allergic reaction, but not anaphylaxis 	<p>ALLERGIES</p> <ul style="list-style-type: none"> History of severe allergic reaction (e.g., anaphylaxis) to another vaccine (not including Pfizer-BioNTech vaccine) History of severe allergic reaction (e.g., anaphylaxis) to an injectable therapy <p>ACTIONS:</p> <ul style="list-style-type: none"> Risk assessment Potential deferral of vaccination 30 minute observation period if vaccinated 	<p>ALLERGIES</p> <ul style="list-style-type: none"> History of severe allergic reaction (e.g., anaphylaxis) to any component of the Pfizer-BioNTech vaccine <p>ACTIONS</p> <ul style="list-style-type: none"> Do not vaccinate

* See Special Populations section for information on patient counseling in these groups

What You Need to Know

- You will be contacted when it is time for your vaccination
- Continue to refer to the daily updates and the intranet for information
- Read thru the documents required for vaccination
 - Pfizer BioNTech Covid-19 Vaccine EUA FAQ
 - QHS FAQ for Pfizer Vaccine
 - QHS Pre-Vaccination Screening Form
 - Covid Vaccination Record Card (fyi, do not download)
 - What to expect after vaccination

What You May Have Heard

- **(CNN)**Two workers at an Alaska hospital suffered allergic reactions after receiving Pfizer's Covid-19 vaccine this week, and one was kept for observation for at least two nights, hospital representatives said.
- The person who was hospitalized felt flushed within the first 10 minutes and later reported shortness of breath, elevated heart rate and developed a rash over her face and torso. She responded to Epinephrine. She had no previous history of allergies to vaccines.
- The second healthcare worker was treated for less severe symptoms after injection and reported as feeling fine within an hour. Symptoms were reported as eye puffiness, light headedness and scratchy throat 10 minutes after injection. This person received epi, Benadryl and Pepcid.
- “Currently, the CDC recommendation is that if you ever had a severe allergic reaction to an injectable medical product, you shouldn't get this vaccine.”
- The reasons are unknown for the reactions and it maybe be population associated.
- Ref: <https://www.cnn.com/2020/12/16/health/alaska-allergic-reaction-coronavirus-pfizer-vaccine/index.html>

New Approval Pending

- 12_17_2020 FDA advisory panel endorses Moderna's Covid-19 vaccine which will provide a path for authorizing via and EUA.
- Analysis of the Moderna data reported two people developed facial swelling after vaccination and both had a prior history of getting cosmetic injections of dermal fillers in their cheeks six months before and two weeks before.
- A third person had lip swelling approx. 2 days after vaccination and had prev had dermal fillers in the lip (this person reported a similar reaction after a previous influenza vaccine.
- The lipid nanoparticles are not the same in both vaccines, Pfizer and Moderna
- Lipid nanoparticles are used in the vaccines to encase the mRNA and protect it from being degraded before it can enter cells and trigger an immune response
- Ref: <https://www.statnews.com/2020/12/17/moderna-vaccine-fda-panel/>

Next Steps

- Vaccine task force is meeting twice weekly via webex
- Updates are provided MWF via the COVID-Ops Group
- The intranet now has a COVID-19 Vaccine tab
- Subgroups are working on the phases of vaccination allocation
- Alternative clinic sites are being investigated e.g, outdoor options for increasing volume
- Expect additional doses to arrive the week of December 21st with another 975 doses
- Additional supply anticipated to arrive in the following weeks that “top off” the allocations